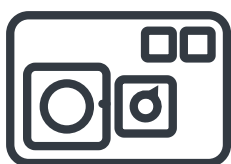
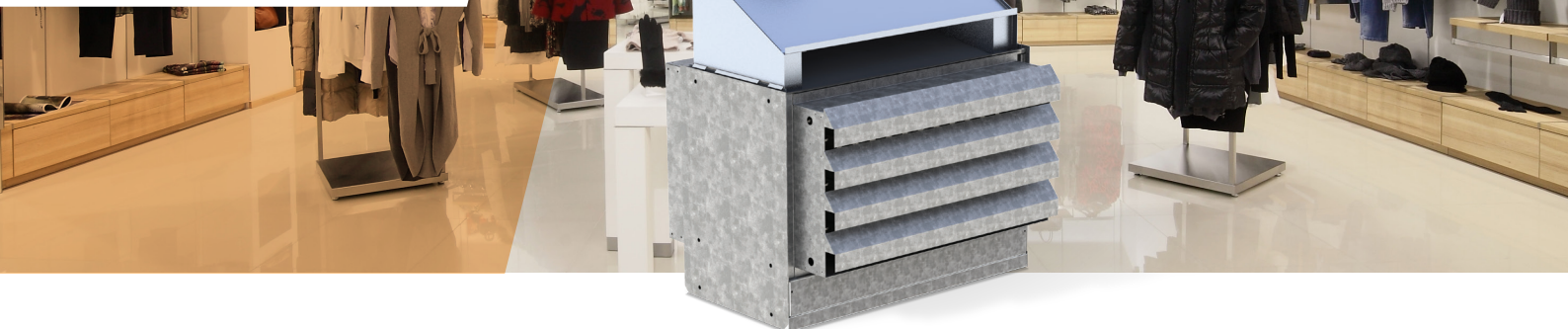


# F Series

## Gas heaters



CONTROL PANEL



ROOF COWL



ROOM THERMOSTAT

A compact, energy efficient, indirect gas fired, suspended heater. Ideal for door curtains, recreational buildings, shops, workshops and showrooms.

### FEATURES

- Stainless steel heat exchanger
- On/off firing
- Axial fan
- Standing pilot
- Horizontal outlet louvers to direct hot air downwards
- No chemical refrigerants
- 28 to 94 kW capacity and up to 2,400 L/s airflow

### OPTIONS

- Electric ignition
- On/off room thermostat
- Control panel
- Roof cowl
- Natural gas fired, optional LPG

### THROW CHART

Height Above Floor	DU12F		DU16F		DU22F		DU30F		DU40F	
	A	B	A	B	A	B	A	B	A	B
3.2m	19.3	14.4	22.3	16.7	-	-	-	-	-	-
3.9m	17.3	13.4	20.3	15.4	23.6	17.7	29.5	22.3	-	-
4.5m	16.0	12.0	18.7	14.1	21.6	16.4	27.5	20.6	33.7	25.5
5.2m	14.4	10.8	16.7	12.5	19.7	14.7	24.9	18.6	31.1	22.9
5.9m	-	-	15.0	11.5	18.0	13.4	22.6	17.0	28.5	20.6
6.5m	-	-	-	-	16.7	12.4	20.6	15.4	25.5	18.6

### SPECIFICATIONS

Model	DU12F	DU16F	DU22F	DU30F	DU40F
Input (MJ/hr)	126.5	168.8	231.1	316.5	422.0
Output (kW)	28.13	37.50	51.57	70.32	93.76
Air Volume (L/s)	700	934	1116	1610	2436
Motor (W/Amps/Phase)	50/2.2/1	95/3.0/1	125/4.0/1	250/5.0/1	2 x 125/2 x 4.0/1
Fan Diameter (mm)	406	457	457	508	2 x 508
Weight (kg)	84	98	118	175	236