

# Harness the *power* of **Braemar**

By **SEELEY INTERNATIONAL** 

100%  
Australian  
owned!

## Flexible Heating & Cooling Solutions

- High wall split systems
- Multi-split systems
- Ducted with zone control
- Cassette split systems
- Add-on cooling systems

# 100%

*comfort* in all conditions<sup>1</sup>



Reverse Cycle Air Conditioning

2025-26

# The Braemar *difference*

This well loved brand has been supplying Australians with multiple heating and cooling technologies for decades.



## Australian owned

Seeley International, Australia's leading cooling and heating manufacturer.



## Quality

80 year history of Braemar excellence and reliability!



## Range

Braemar offers a comprehensive range to suit all requirements.



## Environment

A majority of our reverse cycle air conditioners use the latest R32 refrigerant.



## Innovative

Product enhancements and technology to improve customer experience and product reliability.



## Warranty

5 year comprehensive manufacturer's warranty.

A network of highly professional dealers and service agents throughout Australia.

The Braemar inverter product range is sourced from the world's largest residential manufacturer of reverse cycle air conditioning systems – Gree Electric.

It is backed up by world class Australian manufacturer, Seeley International, providing leading-edge local service and support.

*“Seeley International never stops striving to innovate and build the world's most energy efficient heaters and air conditioners. It is this commitment to excellence that's at the heart of everything we do.”*

*Frank Seeley*

AM, DUniv Flin, FAICD  
Founder and Executive Chairman



Front Page: 1. The reverse cycle system must be installed as per the installation manual and not be operating outside of its design conditions.



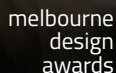
# The *ultimate* choice for comfort in all conditions

High Wall Split Systems	5-7
Multi-Split Systems	8-9
Ducted Systems	10-13
Controllers	14-16
Cassette Split Systems	17
ZERL ratings	18
Add-on Cooling Systems	19-21
Technical Specifications	22-27

## The Award Winning Company

Seeley International consistently wins awards for new product design, innovation and environmental friendliness.

These awards include:





# Standard features

## The DC inverter technology difference

All Braemar systems feature DC inverter technology. An inverter is a power conversion circuit that electronically regulates the voltage, current and frequency in an air conditioner. This circuit controls the compressor and the outdoor and indoor fans, maximising the air conditioner's efficiency.

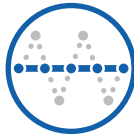
Compared to conventional models, inverter air conditioners provide:



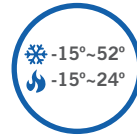
Quicker and finer temperature control and comfort.



Significantly lower running costs.



Elimination of temperature fluctuations.



Wider operating temperatures (model specific).



Quiet operation inside and outside the home.



## DRED as standard

With the introduction of smart power meters (PeakSmart in QLD and REPS in SA), the electrical supply authority can limit the amount of power to the property at certain times during extreme weather conditions, when the power supply is at peak demand using DRED (Demand Response Enabling Device).

In some states, the power supply authorities offer financial incentives to consumers who install DRED enabled air conditioning systems; all of Braemar's latest inverter products now come with DRED capability as standard.





# High wall split system air conditioning

The ideal solution to cool or heat just one area or room of the home or office.

Braemar high wall split systems come in five capacities. From the study to large open plan living spaces, these units will efficiently cool or heat any room.



Single room  
solution



# Austral-air® inverter split system

## Indoor unit



### ZERL

Rated to the latest zoned energy rating label standard.



### Range

5 capacities to suit small to large spaces.



### iFeel mode

Room temperature controlled exactly where it is required.



### Wi-Fi control

Built in as standard.

- Standard white finish for contemporary look.
- Available in 5 sizes for domestic and commercial use. Unit can be installed in small homes and large spaces.
- Dry connection available for gate-card or remote on/off, great for schools or hotels.
- Triple-layer anti-corrosion coating on printed circuit boards to protect electronics.



Wi-Fi control available through the EWPE Smart app



## Additional features



Auto adjusted sleep curves



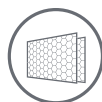
Draught protection



Timer



Intelligent defrosting



Protective filters



Turbo button



Self-diagnostic



Wide operating temperatures



Optional wired wall controller



Energy saving<sup>2</sup>



Dehumidification



Auto restart



Auto-clean



3 layer PCB protection

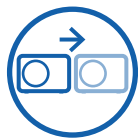
<sup>2</sup> With use of optional wired wall controller.



## Outdoor unit



**R32 refrigerant**  
68% lower Global Warming Potential and more energy efficient than R410A.



**Flexible outdoor placement**  
Long pipe runs up to 40m.



**Blue fin**  
Advanced protection to reduce corrosion and protect from the harsh Australian elements.



**Slim design**  
Allows more flexibility in placing outdoor units.



**DRED**  
Demand response enabled device capability is standard.

## FAQs

### Will a split system suit my needs?

Split systems are a cost effective way to heat and cool one room in your home. The Braemar range comes in a number of capacities, to suit small studies, right up to large open plan living spaces. Installation costs are generally much lower than for ducted systems, making split systems an attractive choice for both budget-conscious homeowners and for those who face installation challenges who still want efficient, quick heating and cooling in single rooms and large spaces. Braemar has single split systems (one indoor unit to one outdoor unit) and multi-split systems (where you can have a number of indoor units connected to the one outdoor unit).

### How do I maximise the operation of my split system?

- Dirt, leaves and debris can collect over time around your outdoor unit, or be sucked into the air inlet. Restriction to airflow will reduce the unit's performance and efficiency, so be sure to check periodically and clear away any loose litter and dirt from the unit and air inlet.
- Clean your air filter on the indoor unit before summer and winter starts. Your owner's manual will have step by step instructions on how to do this. The cleaner the return air filter, the more energy efficient your air conditioning system will be.
- Allowing your system to gradually heat, or cool, will be more energy efficient than cranking your thermostat settings. Whilst it may be tempting to set the control to minimum for cooling, or, maximum for heating, a 1°C increase on the thermostat can equate to up to 10% more energy used<sup>3</sup>. For example, heating set to 22°C will have to work much harder than if it were set to 19°C, when heating.
- Use the settings features like timer and "I feel" mode to further maximise energy efficiency and comfort levels. Ideally, your unit should already be running before the hottest or coldest part of the day. Some of our controls also have "SAVE" function, where the lower limit for cooling and the upper limit for heating can be set, a great way to prevent excessive power bills.

3. Information sourced from energy.gov.au/households/heating-and-cooling June 2022

# Multi-split system air conditioning

Cool or heat multiple rooms individually from just one outdoor unit.

Multi-split system air conditioning enables the connection of up to five indoor units to a single outdoor unit. Save running costs by heating or cooling rooms as required with different temperature settings in each room.



## Wall mounted split system

The Austral-air® range is available in 5 sizes.



## Bulkhead

The bulkhead range is available in 4 sizes.

Multiple  
room  
solutions



## Cassette

The cassette range is available in 4 sizes.

## Outdoor unit

A central slimline unit with long pipe run and easy installation.



# Multi-split range

## Indoor unit options

High wall split systems offer a wall mounted, modern design option. The **Austral-air®** is available in 5 sizes for multi-split system configurations. Wi-Fi built in as standard.



The bulkhead range allows for a more discreet installation. The indoor unit is designed to fit seamlessly into the ceiling, with only the suction and discharge grilles visible in your living space. Available in 4 sizes.



The compact ceiling mounted cassette integrates cutting-edge technology and innovative features for optimal efficiency and user comfort. It's unique design allows the visible panel to sit flush with standard ceiling panels. Available in 4 sizes.

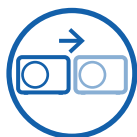


## Outdoor unit



### Black fin

The highest-rated and most corrosion resistant protective coating, enhancing longevity against the harsh Australian elements.



### Flexible outdoor placement

Long pipe runs of up to 75m allows flexibility in placement of an outdoor unit.



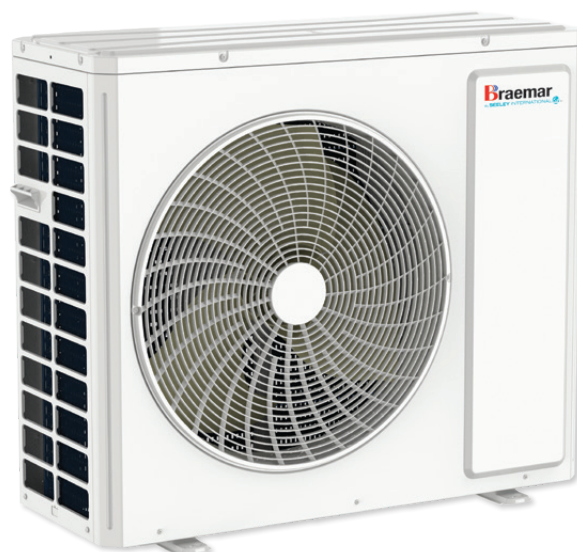
### Slim design

Allows more flexibility in placing an outdoor unit. Easily fits into tighter spaces.



### DRED as standard

Demand response enabled device capability is standard.




### R32 refrigerant

68% lower Global Warming Potential and more energy efficient than R410A.

# Ducted reverse cycle air conditioning

Heat and cool your whole home for ultimate comfort.

Enjoy ultimate year-round whole of home comfort with a Braemar ducted reverse cycle system. With advanced inverter technology, this system delivers faster heating and cooling and significant energy savings on every bill.



Whole of  
home  
solution



# Single phase ducted reverse cycle

## Indoor unit



### Gold fin

Protective coating on the indoor heat exchanger coil for greater durability.



### ZERL

Rated to the latest zoned energy rating label standard.



### Efficient and quiet

Inverter technology, optional motion sensor and installer settings tailoring airflow, all ensuring maximum efficiency and the quietest operation.



### Easy and flexible installation

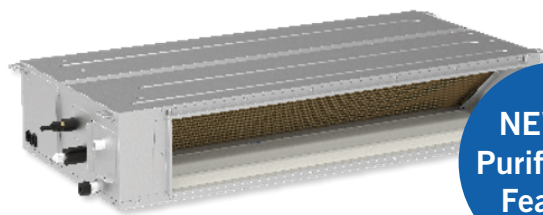
Compact and adaptable room positioning allows for flexible installation choices.  
**Indoor unit is splittable 12, 14 & 16kW.**



### Low profile design

Visually appealing, discreet and low profile unit to deliver conditioned air via ducting and suitable ceiling or wall grilles.

Available in 5 sizes.



**NEW Air Purification Feature!**



### Air purification technology for healthier air

This technology enhances air quality by eliminating harmful substances, including viruses, bacteria, allergens, and strong odours. Through an electric discharge, plasmacluster ions are released into the air, where they target and neutralise harmful particles. By removing these contaminants, indoor air quality is improved, promoting better health.



### Condensate pump as standard

All single phase ducted inverters have the option of utilising the built in drain pump or the gravity drain. The condensate pump has a 1m lift, making it easier to get the condensate away from the indoor unit and to the nearest drain point. This provides flexible installation options.



### Home automation system adaptable

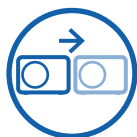
Built in Modbus adapter for third party controller compatibility. Remote on/off control available for applications that require connection to a Building Management System (BMS), or require a room card.

## Outdoor unit



### Black fin

The highest-rated and most corrosion resistant protective coating, enhancing longevity against the harsh Australian elements.



### Flexible outdoor placement

Long pipe runs of up to 75m allows flexibility in placement of an outdoor unit.



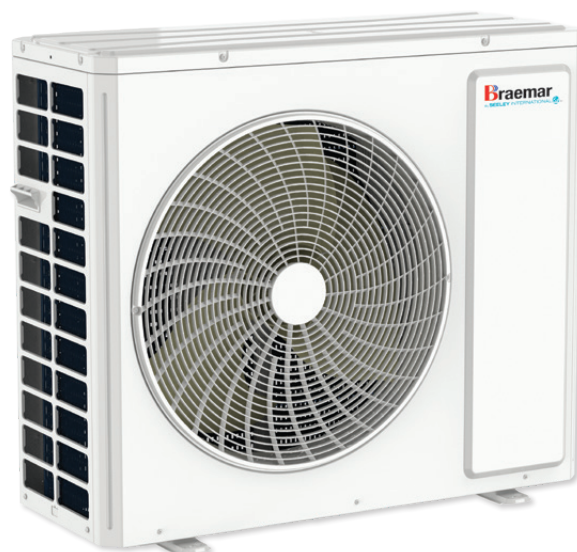
### Slim design

Allows more flexibility in placing an outdoor unit. Easily fits into tighter spaces.



### DRED as standard

Demand response enabled device capability is standard.



### R32 refrigerant

68% lower Global Warming Potential and more energy efficient than R410A.

# Three phase ducted reverse cycle

## Indoor unit



### Gold fin

Protective coating on the indoor heat exchanger coil for greater durability.



### Power saving

High energy efficiency results in significant savings in running costs.



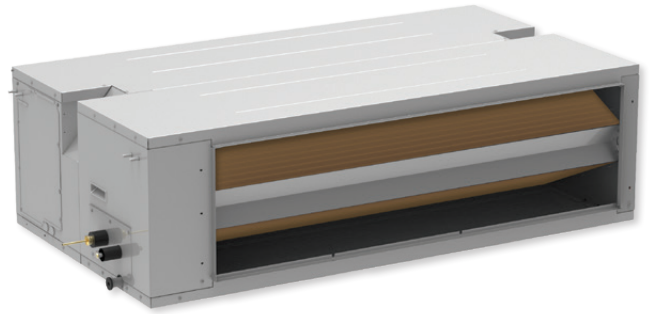
### Low profile design

Visually appealing, discreet and low profile design that can be concealed above ceilings to deliver conditioned air via ducting and suitable ceiling or wall grilles.



### Efficient and quiet

Inverter technology and installer settings tailoring airflow, all ensuring maximum efficiency and quietest operation.



### Easy and flexible installation

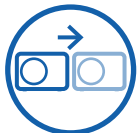
Compact and adaptable room positioning allows for flexible installation choices. 2 core signal cable to outdoor unit allows for quick installation. Indoor unit is splittable.

## Outdoor unit



### Black fin

The highest-rated and most corrosion resistant protective coating, enhancing longevity against the harsh Australian elements.



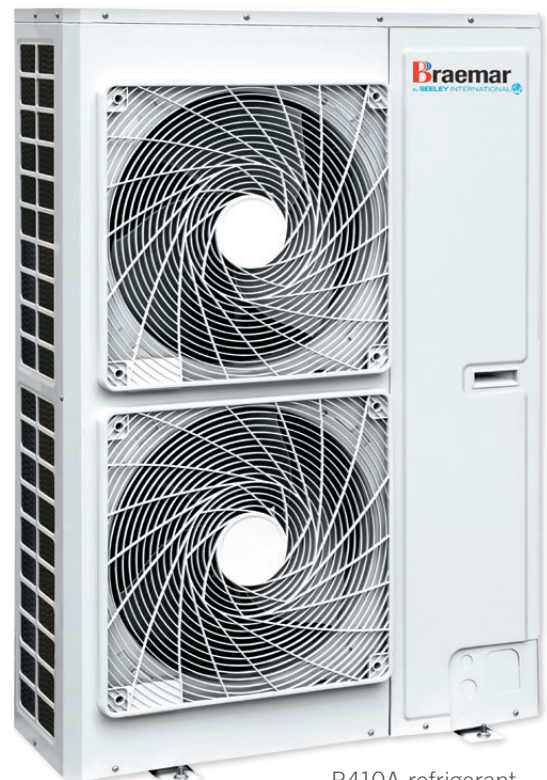
### Flexible outdoor placement

Long pipe runs of up to 70m allow flexibility in placement of an outdoor unit.



### DRED as standard

Demand response enabled device capability is standard.



R410A refrigerant.



## FAQs

### Single vs three phase - what's best?

Single phase is the standard method of distribution of electric power in most homes. For larger homes with multiple high powered appliances, three phase power is generally recommended and will deliver a much more consistent power supply than a single phase. It is important to choose your air conditioner based on your requirements, rather than the power supply readily available.

### I have a two storey home, can I install a ducted reverse cycle system?

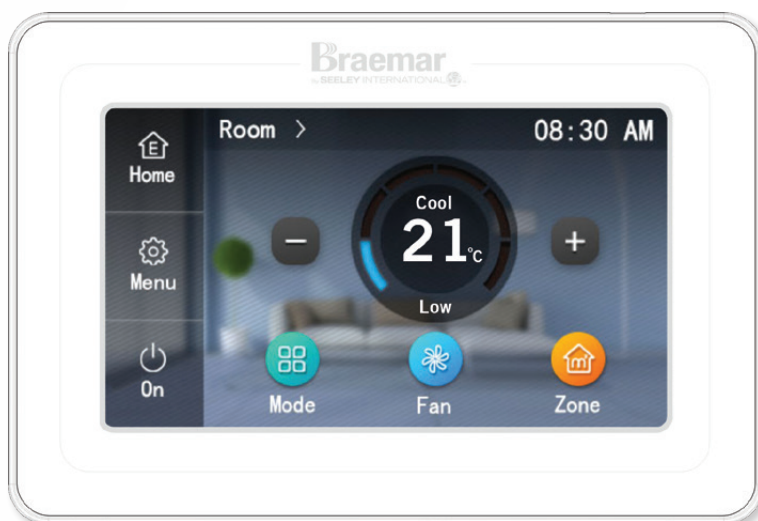
If your home is being newly built, we strongly encourage you to incorporate HVAC ductwork cavities into the building plans, if they have not been included already. For an existing home, the design will largely determine where, and if it is possible to get ductwork from the top to the bottom storey. The ducts are generally run through cupboards, walk-in robes and linen closets for example. **Speak with your Braemar dealer for an in-home assessment for the best solution for your home.**





# Zone controller for ducted reverse cycle systems

Designed to bring comfort at your fingertips, upgrading to a Braemar Zone Controller offers a modern, sleek touch screen interface that will blend seamlessly into the décor of your home.



## Main features



### Touch screen

All functions and operations are only a touch away with the easily navigated interface.



### Program mode

Programmable daily, weekly or 2 weekly, 8 time-period program, customisable to suit your lifestyle.



### Convenient control

Activate or deactivate zone heating and cooling on the RF remote sensor or on the Braemar zone control.



### RF control

Radio Frequency remote sensors for ease of installation.



### Useful settings

Access features such as child lock, quiet mode and servicing information.



### Dry mode

Dehumidify and enhance your air quality with minimal cooling to provide comfort on humid days with low power usage.



### Zone your home

Switch between zones in your home and control the settings in each zone. Save on running costs by switching zones off<sup>4</sup>. Up to 8 zones<sup>5</sup>, with or without individual zone temperature sensing and control.

## Wi-Fi Smart App



Control your heating and cooling comfort needs directly from your mobile device! For example, turn on the heating cycle wherever you are, ensuring you come home to a warm home on those cold winter days. The EWPE smart app is free and available for download on your smartphone. Note: Wi-Fi module sold separately.



Wi-Fi control  
available through the  
EWPE Smart app







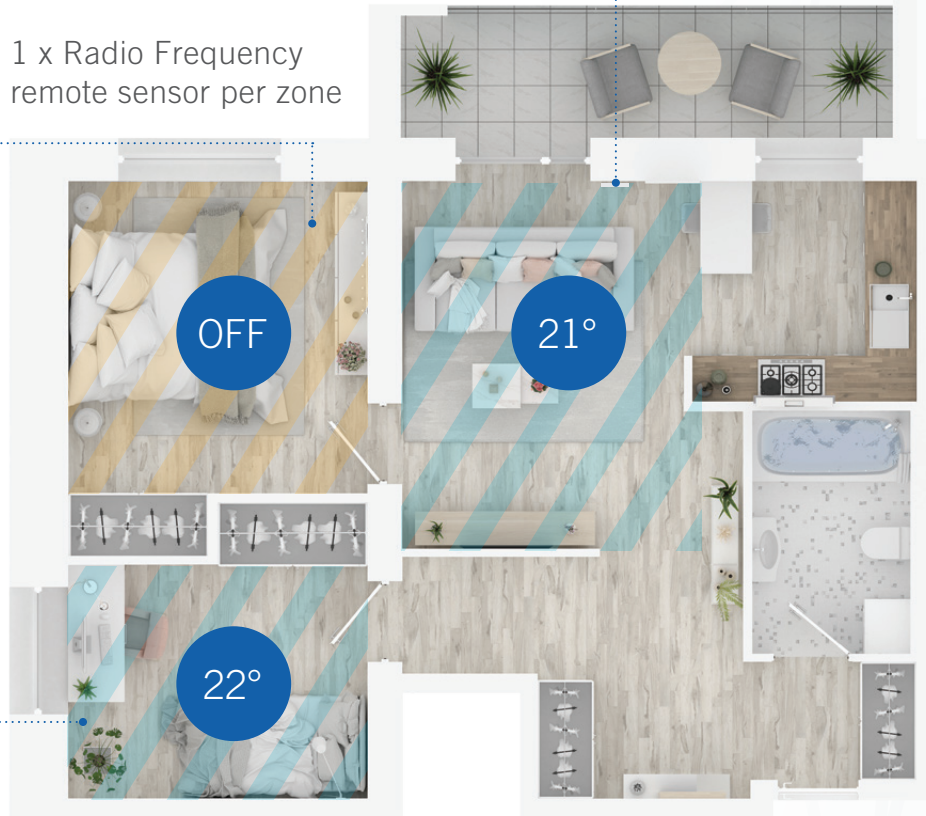
1 x Main Braemar  
Zone Control



Optional subsidiary  
wired wall control



1 x Radio Frequency  
remote sensor per zone



This diagram is for illustration purposes only.  
Zoning is subject to individual house design.

- Control 4 to 8<sup>5</sup> zones with individual temperature control.
- Set different temperatures for each zone.
- Ability to turn zones on and off, at the RF remote sensor, or, at the wired wall control.
- Total control with up to 8 time schedules per zone per day.
- Each zone can be both temperature and time schedule controlled.
- Prevent excessive power bills by setting "SAVE" function. This function limits the upper and lower temperature settings.
- Optional additional subsidiary wired wall control can be purchased to allow two access points to your zone system.
- "I-Demand" function limits the power input to 75% to assist with reducing energy bills.
- "X-Fan" function allows the indoor fan to continue after the system has been switched off in cooling mode, this helps dry the indoor heat exchanger.
- Optional Wi-Fi control module.

Note: Braemar zone control matches with our latest R32 single phase KDHA series and R410A three phase SDHS series. Some zones can be operated without the RF remote sensor however a minimum of one sensor is required for the system because wired wall control does not have a built-in sensor.

4. Zoning is an optional extra. Additional costs apply.

5. Braemar zone control kit comes standard for a 4 zone system. This kit can be expanded to 8 zones with the purchase of additional RF remote sensors.

# Ducted systems standard wall controllers



		Single Phase XE7C-24/HC - standard	Three Phase XK46 - standard
	<b>LCD backlit display</b> For visibility at night.	✓	✓
	<b>5 modes</b> Auto, cool, dry, fan, heat.	✓	✓
	<b>Multiple fan settings</b> Low, medium-low, medium, medium-high, high.	✓	✓
	<b>Sleep function</b> Adjusts temperature up or down a few degrees during the night. Reduces energy usage while sleeping.	✓	✓
	<b>Quiet function</b> Reduces fan speed to ensure the indoor unit runs more quietly.	✓	✓
	<b>Memory function (if a power failure occurs)</b> Automatically restarts and resumes the settings.	✓	✓
	<b>Turbo function</b> Ultra high fan speed to quickly cool the home.	✓	✓
	<b>Energy-saving function</b> Change the pre-set upper and lower temperatures. Perfect for apartments to reduce energy usage.	✓	✓
	<b>X-Fan function (in cooling mode)</b> Extends the time the fan continues to run after the cooling set point temperature is met.	✓	✓
	<b>Defrosting function</b> Auto function to ensure optimum heating even in the iciest environments.	✓	✓
	<b>Filter clean notification</b> Automatic reminder that filter needs cleaning.	✓	✓
	<b>Timer</b> Set the on/off of the air conditioner to save money.	✓	✓
	<b>Child lock</b> Children are unable to change settings.	✓	✓
	<b>Error code display</b> Assists in fault identification and troubleshooting. Also displays when DRED is in operation.	✓	✓
	<b>Read ambient outdoor temperature</b> Understand how well the unit is functioning.	✓	✗
	<b>Built in Wi-Fi</b> Control your heating and cooling comfort needs directly from your mobile device.	✓	✗
	<b>Weekly timer</b> 7 or 14 day programmable weekly timer.	✓	Upgrade available

Other controllers may be available, please check with the dealer.



# Cassette split system

## Indoor unit



### ZERL

Rated to the latest zoned energy rating label standard.



### Efficient and quiet

Inverter technology and installer settings tailoring airflow, all ensuring maximum efficiency and quietest operation.



### Condensate pump as standard

All single phase ducted inverters have the option of utilising the built in drain pump or the gravity drain. The condensate pump has a 1m lift, making it easier to get the condensate away from the indoor unit and to the nearest drain point. This provides flexible installation options.



### Easy and flexible installation

Compact and adaptable room positioning allows for flexible installation choices.



### Home automation system adaptable

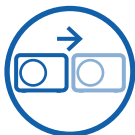
Built in Modbus adapter for third party controller compatibility. Remote on/off control available for applications that require connection to a Building Management System (BMS), or require a room card.

## Outdoor unit



### Black fin

The highest-rated and most corrosion resistant protective coating, enhancing longevity against the harsh Australian elements.



### Flexible outdoor placement

Long pipe runs of up to 75m allows flexibility in placement of an outdoor unit.



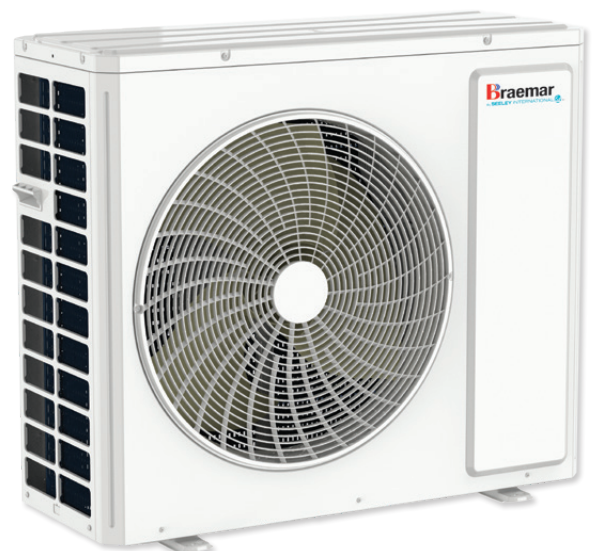
### Slim design

Allows more flexibility in placing an outdoor unit. Easily fits into tighter spaces.



### DRED as standard

Demand response enabled device capability is standard.



### R32 refrigerant

68% lower Global Warming Potential and more energy efficient than R410A.

# ZERL Zoned Energy Rating Label

## What you need to know

Energy rating labelling on air conditioners has taken a big leap forward, with the Zoned Energy Rating Label (ZERL) mandatory on new models from April 1, 2020. The ZERL label allows consumers to make a more informed decision for their heating and cooling. The labels outline how much heating and cooling power a model has, noise production, and energy efficiency and usage based on location. ZERL labels can be found on Braemar single phase ducted reverse cycle systems and split systems.

### Cooling capacity



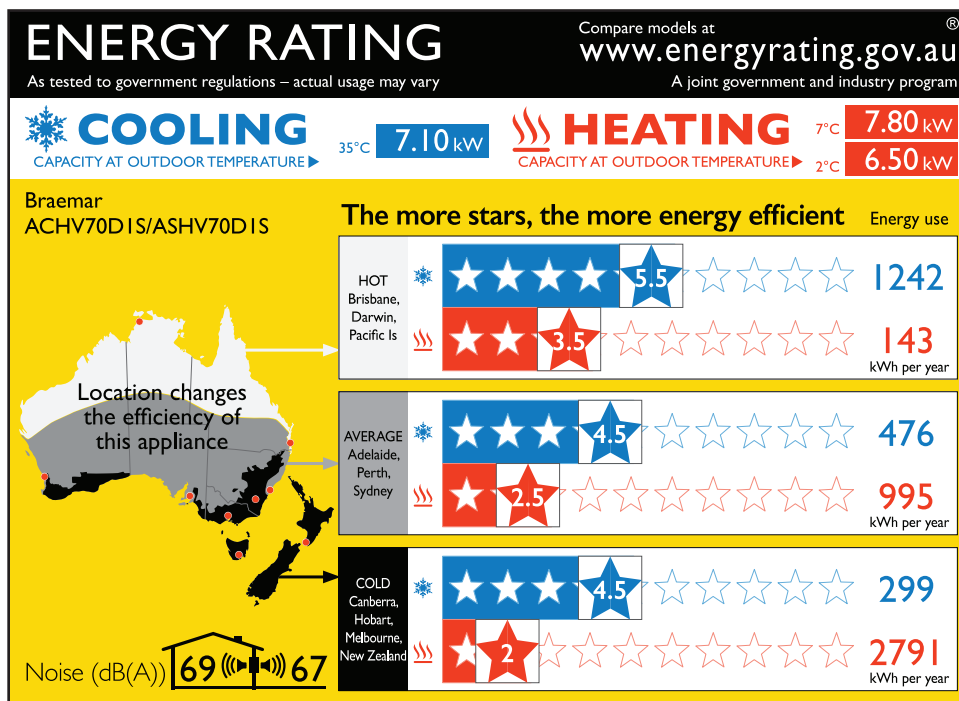
This tells you how much cooling the air conditioner can provide. This example tells you that if the temperature outside is hot (35°C), then the appliance can provide 7.10 kilowatts (kW) of cooling. System size is critical, and will depend on size of space to be cooled, insulation, windows and shade. A correctly sized system will make your cooling more efficient and affordable.

### Heating capacity



This tells you how much heating the air conditioner can provide. This example tells you that if the temperature outside is cold (7°C), then the appliance can provide 7.80 kilowatts (kW) of heating, and if the temperature outside is very cold (2°C), then the appliance can provide 6.50 kW of heating.

Model name and number



### Noise levels - sound power

This tells you how loud the air conditioner will be when it is running. The number inside the house is how loud it will be inside the home, and the number outside the house is how loud it will be near the outside unit.

The sound pressure will vary depending upon the installation site. Hard surfaces can reflect noise and influence the sound levels heard both inside and outside the home.

### Efficiency ratings based on location

The efficiency of a product will change dependent on the location in which it operates. The new ZERL helps consumers to determine which model would work best in their location.

There are three bands of ratings, for Hot, Average and Cold areas in Australia and New Zealand. Use the map to see which area you live in, and which band you should use.

### Electricity usage

This tells you how much electricity the air conditioner will use each year for cooling and heating.

The lower the kWh used, the lower the cost to run the appliance. If you know your electricity tariff, you can multiply it by these figures to estimate yearly running costs.

### Information source

All information on this page has been sourced from [www.energyrating.gov.au](http://www.energyrating.gov.au). The ZERL pictured is for Braemar model ACHV70D1S/ASHV70D1S.





# Add-on cooling systems

The ideal solution for whole of home comfort, complementing a new or existing Braemar ducted gas heating system<sup>6</sup>

Whole of  
home  
solution



# Add-on cooling for ducted gas heating

Add-on cooling systems are specifically designed to complement a new or existing<sup>7</sup> Braemar ducted gas heating system. Compact and economical to run, it can be installed at the same time as a heating system, or added later.

Add-on cooling systems utilise existing Braemar ducted gas heating ductwork and grilles to provide refrigerated cooling.



6. Only Braemar extra air model heaters are designed to be paired with Braemar add-on cooling systems. For the Add-on cooling range, the Invertair™ indoor units are manufactured in Australia (from local and imported components).
7. Applicable to installations where airflow requirements and duct design are suitable. Not all models of Braemar ducted gas heaters are suitable for add-on cooling, so please check with the dealer.



# Invertair™

Innovative inverter R32 Add-on cooling system.

## Indoor unit

The Inverter technology ensures all year round comfort and a significant saving in running costs.



### Power saving

High energy efficiency results in significant savings in running costs.



### Efficient and quiet

Inverter technology, 3.8W standby mode and automatic fan adjustment as the evening temperature drops, all ensure maximum efficiency and quietest operation.



### Easy and flexible installation

Compact and suitable for installation in almost all roof cavities. Room positioning and grille options allow for flexible installation choices.

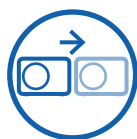


### Low profile design

Functional low profile design that has ease of install-ability above ceilings or below the floor to deliver conditioned air via ducting and suitable ceiling or floor grilles.

**Note:** The Invertair™ series can only be installed with the TQ heater and MagIQtouch® controller.

## Outdoor unit



### Flexible outdoor placement

Long pipe runs of up to 75m allows flexibility in placement of an outdoor unit.



### Slim design

Allows more flexibility in placing an outdoor unit. Easily fits into tighter spaces.



### R32 refrigerant

68% lower Global Warming Potential and more energy efficient than R410A.



# Technical specifications

## Austral-air® inverter split indoor and outdoor units

Model			Outdoor	ACHV25D1S	ACHV35D1S	ACHV50D1S	ACHV70D1S	ACHV80D1S
			Indoor	ASHV25D1S	ASHV35D1S	ASHV50D1S	ASHV70D1S	ASHV80D1S
Capacity		Cooling	kW	2.7	3.52	5.2	7.1	8.2
		Cooling Range	kW	0.7 - 3.4	0.5 - 4.5	0.8 - 6.3	2.5 - 8.2	3.3 - 9.4
		Heating	kW	3.0	3.8	5.8	7.8	9.0
		Heating Range	kW	0.8 - 3.8	0.9 - 4.8	1.0 - 6.5	2.0 - 8.6	3.0 - 10.1
ZERL Star Rating (Hot / Average / Cold)		Cooling	-	3.5 / 3.0 / 3.5	4.5 / 4.0 / 4.0	3.5 / 3.0 / 3.5	5.5 / 4.5 / 4.5	4.0 / 3.5 / 3.5
		Heating	-	3.0 / 2.0 / 1.5	3.0 / 2.5 / 2.0		3.5 / 2.5 / 2.0	
AEER			W/W	3.73	3.84	3.36	3.66	3.27
ACOP			W/W	3.88	3.89	3.65	3.86	3.37
Air Flow			l/s (m³/h)	153 (550)	183 (660)	278 (1000)	375 (1350)	389 (1400)
Electrical Data	Power Supply		V / Hz / Ph			230 / 50 / 1		
	Power Input (Nominal)	Cooling	kW	0.72	0.91	1.53	1.92	2.49
		Heating	kW	0.77	0.97	1.57	2.00	2.65
	Minimum Circuit Breaker Outdoor		A	10		16	20	
	Maximum Current Input		A	7.2	7.4	10.0	12.5	15.0
Indoor Unit	Sound Pressure Level (Max)		dB (A)	40	43	47	53	
	Outline Dimension (W x D x H)		mm	783 x 185 x 260	835 x 200 x 275	943 x 246 x 333	1078 x 246 x 333	
	Net Weight		kg	8.0	8.5	13.0	15.0	
Outdoor Unit	Sound Pressure Level (Max)		dB (A)	51	52	56	60	61
	Outline Dimension (W x D x H)		mm	732 x 330 x 555		802 x 350 x 555	958 x 402 x 660	
	Net Weight		kg	24.5	27.5	31.5	42.0	45.5
Refrigerant R32		Chargeless Length	m	5				
		Additional Charge	g/m	16				
Pipe	Outer Diameter	Liquid Pipe	mm (Inch)	Ø6.35 (1/4)				
		Gas Pipe	mm (Inch)	Ø9.52 (3/8)		Ø12.70 (1/2)		
	Max Distance	Height	m	10			25	
		Length	m	15	20	25	40	
Ambient Temperature Range		Cooling	°C	-15 ~ 52				
		Heating	°C	-15 ~ 24				

ZERL Zoned Energy Rating Label - The Austral-air® range utilises the Zoned Energy Rating Label. Refer to page 18 for more information, or visit: <https://www.seeleyinternational.com/seeley-learning-centre/zerl/>

## Multi-split bulkhead indoor units

Model			Indoor	NDHV25D1S	NDHV35D1S	NDHV50D1S	NDHV70D1S
Cooling Capacity			kW	2.65	3.5	5.0	7.0
Sensible Cooling Capacity			kW	2.1	2.54	3.77	5.29
Heating Capacity			kW	2.8	4.0	5.5	8.0
Dehumidifying Volume			l/hr	0.8	1.4	1.8	2.5
Indoor Unit	Power Supply		V / Hz / Ph	230 / 50 / 1			
	Airflow (Min ~ Max)		l/s	105 ~ 180	144 ~ 194	203 ~ 244	250 ~ 417
	ESP Nominal (Min ~ Max)		Pa	25 (0 ~ 60)			25 (0 ~ 125)
	Sound Pressure Level (Min ~ Max)		dB (A)	32 ~ 39	34 ~ 41		36 ~ 45
	Outline Dimension (W x D x H)		mm	710 x 450 x 200		1010 x 450 x 200	900 x 655 x 260
	Net Weight		kg	18.5	19.0	25.0	31.0
Supply Air Outlet		Height	mm	122			215
		Width	mm	585		885	741
Return Air Inlet		Height	mm	200			234
		Width	mm	710		1010	871
Pipe	Outer Diameter	Liquid Pipe	mm (Inch)	Ø6.35 (1/4)			
		Gas Pipe	mm (Inch)	Ø9.52 (3/8)		Ø12.7 (1/2)	Ø15.88 (5/8)



## Multi-split cassette indoor units

Model			Indoor	NBHV25D8S	NBHV35D8S	NBHV50D8S	NBHV71D8S
Cooling Capacity			kW	2.8	3.5	5.0	7.1
Sensible Cooling Capacity			kW	1.84	2.54	3.77	5.39
Heating Capacity			kW	2.8	4.0	5.5	7.8
Dehumidifying Volume			l/hr	1.4		1.8	2.5
Indoor Unit	Power Supply		V / Hz / Ph	230 / 50 / 1			
	Airflow (Min ~ Max)		l/s	206 ~ 330		206 ~ 383	412 ~ 565
	Sound Pressure Level (Min ~ Max)		dB (A)	28 ~ 41		28 ~ 43	37 ~ 46
	Outline Dimension (W x D x H)		mm	570 x 570 x 265			840 x 840 x 200
	Net Weight		kg	17			21
Fascia Panel	Model		No	TF05			TF06
	Outline Dimension (W x D x H)		mm	670 x 670 x 47.5			950 x 950 x 52
	Net Weight		kg	3.0			6.0
Pipe	Outer Diameter	Liquid Pipe	mm (Inch)	Ø6.35 (1/4)			
		Gas Pipe	mm (Inch)	Ø9.52 (3/8)		Ø12.7 (1/2)	Ø15.88 (5/8)

## Multi-split outdoor units

Model			Outdoor	NCHV05D12B	NCHV07D13B	NCHV08D14B	NCHV10D14B	NCHV12D15B
Cooling Capacity			kW	5.3	7.3	8.2	10.6	12.3
Cooling Capacity Range (Min ~ Max)			kW	2.14 ~ 5.8	2.3 ~ 9.2	2.3 ~ 11.0	2.6 ~ 12.0	2.6 - 15.2
Heating Capacity			kW	5.6	8.3	8.8	11.4	12.6
Heating Capacity Range (Min ~ Max)			kW	2.58 ~ 6.5	2.8 ~ 9.2	2.8 ~ 10.25	3.0 ~ 14.0	3.0 - 15.5
Max Indoor Capacity			kW	7.9	10.9	12.3	15.1	18.4
AEER			W/W	3.78	3.67	4.28	3.95	3.92
ACOP			W/W	4.24	4.09	4.09	3.95	3.89
Electrical Data	Power Supply		V / Hz / Ph	230 / 50 / 1				
	Power Input (Nominal)	Cooling	kW	1.38	1.96	1.88	2.65	3.10
		Heating	kW	1.30	2.00	2.12	2.85	3.20
	Maximum Current Input		A	11.0	15.0	16.0	21.7	
	Minimum Circuit Breaker Outdoor		A	16	20		25	
Outdoor Unit	Maximum Drive IDU		No.	2	3	4		5
	Sound Pressure Level		dB(A)	54	58		60	
	Outline Dimension (W × D × H)		mm	822 x 352 x 550		964 x 402 x 660		1020 x 427 x 826
	Net Weight		kg	34.0	47.5	51.0	72.0	73.0
Refrigerant R32		Chargeless Length	m	40				50
		Additional Charge	g/m	20				
Pipe	Outer Diameter	Liquid Pipe	mm (Inch)	2 x Ø6.35 (1/4)	3 x Ø6.35 (1/4)	4 x Ø6.35 (1/4)		5 x Ø6.35 (1/4)
		Gas Pipe	mm (Inch)	2 x Ø9.52 (3/8)	3 x Ø9.52 (3/8)	4 x Ø9.52 (3/8)		5 x Ø9.52 (3/8)
	Maximum Distance	Height	m	15			25	
		Length	m	30				
		Sum of all Indoors	m	50	60	70	80	100
Ambient Temperature Operating Range		Cooling	℃	-15 ~ 52				
		Heating	℃	-22 ~ 24				

# Technical specifications

## Single phase ducted indoor and outdoor units

Model			Outdoor	KCHA070D1B	KCHA100D1B	KCHA125D1B	KCHA140D1B	KCHA160D1B
			Indoor	KDHA070D1S	KDHA100D1S	KDHA125D1S	KDHA140D1S	KDHA160D1S
Cooling Capacity			kW	7.1	10.0	12.5	14.0	16.0
Cooling Capacity Range (Min ~ Max)			kW	2.4 ~ 7.8	3.0 ~ 11.7	3.6 ~ 14.0	4.2 ~ 16.0	4.8 ~ 18.0
Heating Capacity			kW	8.0	12.0	14.0	16.0	18.0
Heating Capacity Range (Min ~ Max)			kW	2.2 ~ 8.8	3.6 ~ 13.5	4.20 ~ 15.0	4.8 ~ 17.0	5.4 ~ 20.0
ZERL Star Rating (Hot / Average / Cold)	Cooling		-	3.5 / 3.5 / 3.5	4.0 / 3.5 / 4.0		3.5 / 3.0 / 3.0	3.5 / 3.0 / 3.5
	Heating		-	3.5 / 2.5 / 2.0	3.0 / 2.5 / 2.0	3.5 / 2.5 / 2.0	3.0 / 2.5 / 2.0	3.5 / 2.5 / 2.0
AEER			W/W	3.56	3.69	3.38	3.53	3.31
ACOP			W/W	3.95	3.98	3.79	3.77	3.84
Electrical Data	Power Supply		V / Hz / Ph	230 / 50 / 1				
	Power Input (Nominal)	Cooling	kW	1.97	2.70	3.68	3.92	4.80
		Heating	kW	2.00	3.00	3.68	4.20	4.65
	Maximum Current Input		A	12.5	20.0	25.0	28.0	32.0
	Minimum Circuit Breaker Outdoor		A	20	32		40	
Indoor Unit	Airflow (Max)		l/s (m³/h)	417 (1500)	583 (2100)	778 (2800)	889 (3200)	972 (3500)
	ESP Nominal Range		Pa	0 ~ 160		0 ~ 200		
	Sound Pressure Level (Max)		dB(A)	43	42		45	50
	Outline Dimension (W × D × H)		mm	900 × 655 × 260	1340 × 655 × 260	1350 x 720 x 360		
	Net Weight		kg	30	43	57	60	
Supply Air Outlet		Height	mm	215		190		
		Width	mm	740	1153	850		
Return Air Inlet		Height	mm	234	220	326		
		Width	mm	871	1188	1170		
Outdoor Unit	Sound Pressure Level (Max)		dB(A)	57	58	59		60
	Outline Dimension (W × D × H)		mm	889 × 340 × 660	940 × 370 × 820		900 × 340 × 1260	
	Net Weight		kg	42	67		90	97
	Number of Fans		QTY	1			2	
Refrigerant R32		Pre-Charge Length	m	15				
		Additional Charge	g/m	16	25		35	
Pipe	Outer Diameter		Liquid Pipe	mm (Inch)	Ø9.52 (3/8)			
			Gas Pipe	mm (Inch)	Ø15.88 (5/8)			
	Max Distance		Height	m	20	30		
			Length	m	30	75		
Ambient Temperature Operating Range		Cooling	°C	-15 ~ 52				
		Heating	°C	-15 ~ 24				



## Three phase ducted indoor and outdoor units

Model			Outdoor	SCHS20D3B
			Indoor	SDHS20D1S
Cooling Capacity			kW	20.4
Cooling Capacity Range (Min ~ Max)			kW	13.5 ~ 25.3
Heating Capacity			kW	22.5
Heating Capacity Range (Min ~ Max)			kW	14.1 ~ 26.4
AEER			W/W	3.16
ACOP			W/W	3.54
Electrical Data	Power Supply		V / Hz / Ph	380-415 / 50 / 3
	Power Input (Nominal)	Cooling	kW	6.38
		Heating	kW	6.28
	Rated Current		A	21.40
	Rated Load Amperage (RLA)		A	15.00
Indoor Unit	Rated Airflow		l/s (m³/h)	1330 (4800)
	ESP Nominal (Min ~ Max)		Pa	0 ~ 250
	Drain Pump		Y/N	No
	Sound Pressure (Max)		dB(A)	53
	Outline Dimension (W × D × H)		mm	1520 x 840 x 450
	Net Weight		kg	110
	Supply Outlet (W x H)		mm	966 x 257
	Return Inlet (W x H)		mm	1282 x 361
Outdoor Unit	Sound Pressure		dB(A)	75
	Outline Dimension (W × D × H)		mm	940 x 460 x 1615
	Number of Fans		QTY	2
	Net Weight		kg	190
Refrigerant R410A		Pre-Charge Length	m	7.50
		Additional Charge	g/m	54
Pipe	Outer Diameter	Liquid Pipe	mm (Inch)	Ø9.52 (3/8)
		Gas Pipe	mm (Inch)	Ø22.20 (7/8)
	Max Distance	Height	m	30
		Length	m	70
Ambient Temperature Operating Range		Cooling	°C	-7 ~ 48
		Heating	°C	-15 ~ 24

# Technical specifications

## Cassette split indoor and outdoor units

Model			Outdoor	KCHA070D1B	KCHA100D1B	KCHA125D1B	KCHA160D1B
			Indoor	KBHA070D1S	KBHA100D1S	KBHA125D1S	KBHA160D1S
Cooling Capacity			kW	7.1	10.0	12.5	14.0
Cooling Capacity Range (Min ~ Max)			kW	2.4 ~ 7.8	3.0 ~ 11.7	3.6 ~ 14.0	4.2 ~ 16.0
Heating Capacity			kW	8.0	12.0	14.0	15.4
Heating Capacity Range (Min ~ Max)			kW	2.2 ~ 8.8	3.6 ~ 13.5	4.2 ~ 15.0	4.8 ~ 17.0
ZERL Star Rating (Hot / Average / Cold)	Cooling  Heating		-	4.0 / 3.5 / 3.5	4.0 / 3.5 / 4.0	3.5 / 3.5 / 3.5	3.0 / 3.0 / 3.0
			-	4.0 / 2.5 / 2.0	3.5 / 2.5 / 2.0	3.5 / 2.5 / 2.0	3.0 / 2.0 / 1.5
AEER			W/W	3.56	3.44	3.23	3.32
ACOP			W/W	3.95	3.47	3.32	3.28
Electrical Data	Power Supply		V / Hz / Ph	230 / 50 / 1			
	Power Input (Nominal)	Cooling	kW	1.97	2.90	3.85	4.18
		Heating	kW	2.00	3.45	4.20	4.66
	Maximum Current Input		A	12.5	20.0	25.0	32.0
	Minimum Circuit Breaker Outdoor		A	20	32	32	40
Indoor Unit	Airflow (Max)		l/s (m³/h)	389 (1400)	528 (1900)	639 (2300)	
	Sound Pressure Level (Max)		dB(A)	45	48	51	
	Outline Dimension (W × D × H)		mm	840 x 840 x 200	840 x 840 x 240	840 x 840 x 290	
	Net Weight		kg	21	23	25	
Fascia Panel	Model		No.	TF06			
	Outline Dimension (W × D × H)		mm	950 x 950 x 52			
	Net Weight		kg	6.0			
Outdoor Unit	Sound Pressure Level (Max)		dB(A)	57	58	59	60
	Outline Dimension (W × D × H)		mm	889 × 340 × 660	940 × 370 × 820		900 × 340 × 1260
	Net Weight		kg	42	67		97
	Number of Fans		QTY	1	1	1	2
Refrigerant R32		Pre-Charge Length	m	15			
		Additional Charge	g/m	16	25		35
Pipe	Outer Diameter	Liquid Pipe	mm (Inch)	Ø9.52 (3/8)			
		Gas Pipe	mm (Inch)	Ø15.88 (5/8)			
	Max Distance	Height	m	20	30		
		Length	m	30	75		
Ambient Temperature Operating Range		Cooling	°C	-15 ~ 52			
		Heating	°C	-15 ~ 24			



## Invertair™ series Add-on cooling indoor and outdoor units

Model			Outdoor	KCHV160D1B
			Indoor	KACV160D1S
Cooling Capacity			kW	16.0
Sensible Cooling Capacity			kW	12.9
Cooling Capacity Range (Min ~ Max)			kW	6.0 - 17.0
AEER			W/W	3.40
Electrical Data	Power Supply		V / Hz / Ph	220-240 / 50 / 1
	Power Input (Nominal)	Cooling	kW	4.70
	Rated Current		A	32
	Minimum Circuit Breaker Outdoor		A	40
Indoor Unit	Rated Airflow		l/s (m3/h)	860 (3100)
	Airflow (Min ~ Max)		l/s	610 ~ 1070
	Outline Dimension (W x D x H)		mm	1442 x 435 x 412
	Net Weight		kg	28
Outdoor Unit	Sound Pressure		dB(A)	60
	Outline Dimension (W x D x H)		mm	940 x 320 x 1430
	Net Weight		kg	117
Applicable Braemar DGH (MagIQTouch Range, X extra air)			Model	X30, X32
Refrigerant R32	Chargeless Length		m	20
	Refrigerant Additional Charge		g/m	40
Pipe	Outer Diameter	Liquid Pipe	mm (Inch)	Ø9.52 (3/8)
		Gas Pipe	mm (Inch)	Ø15.88 (5/8)
	Max Distance	Height	m	30
		Length	m	75
Temperature	Cooling Operation Ambient Temperature Range		°C	-15 ~ 52

Note: The above designs and specifications are subject to change without notice for product improvement.

Add-on cooling Invertair™ series are only suitable to be paired with 4, 5 and 6 star Braemar extra air heaters. For the add-on cooling range, only the Invertair indoor units are manufactured in Australia (from local and imported components).



Harness the *power* of nature



### **BREEZAIR**

Ducted Evaporative Air Conditioning

### **BRAEMAR**

Ducted Evaporative Air Conditioning | Ducted Gas Heating  
Reverse Cycle Air Conditioning | Gas Wall Furnaces

### **THE CLIMATE WIZARD**

Micro-Core® Technology

### **SUPERCOOL**

Ducted Evaporative Air Conditioning

### **COOLAIR**

Ducted Evaporative Air Conditioning

### **COOLERADO**

Indirect Evaporative Air Conditioning

### **AIRA**

Direct and Indirect Evaporative Air Conditioning | Ducted Gas Heating  
Commercial Gas Space Heating | Energy Recovery Systems

### **INTEGRATED COMFORT INCORPORATED (ICI)**

Dual Cool® Patented Dual Evaporative pre-cooling products

[seeleyinternational.com/braemar](http://seeleyinternational.com/braemar)

1300 360 815



With the generous support of our  
Australasian dealers we are proud to  
be the National Variety Bash partner  
supporting kids in need across Australia.

**Seeley International Pty Ltd**

ABN 23 054 687 035

112 O'Sullivan Beach Road, Lonsdale, SA 5160

Phone: (08) 8328 3850

[seeleyinternational.com](http://seeleyinternational.com)

Information and images in this brochure were correct  
at the time of preparation. E & OE

Cat No M457 REV H (0825)