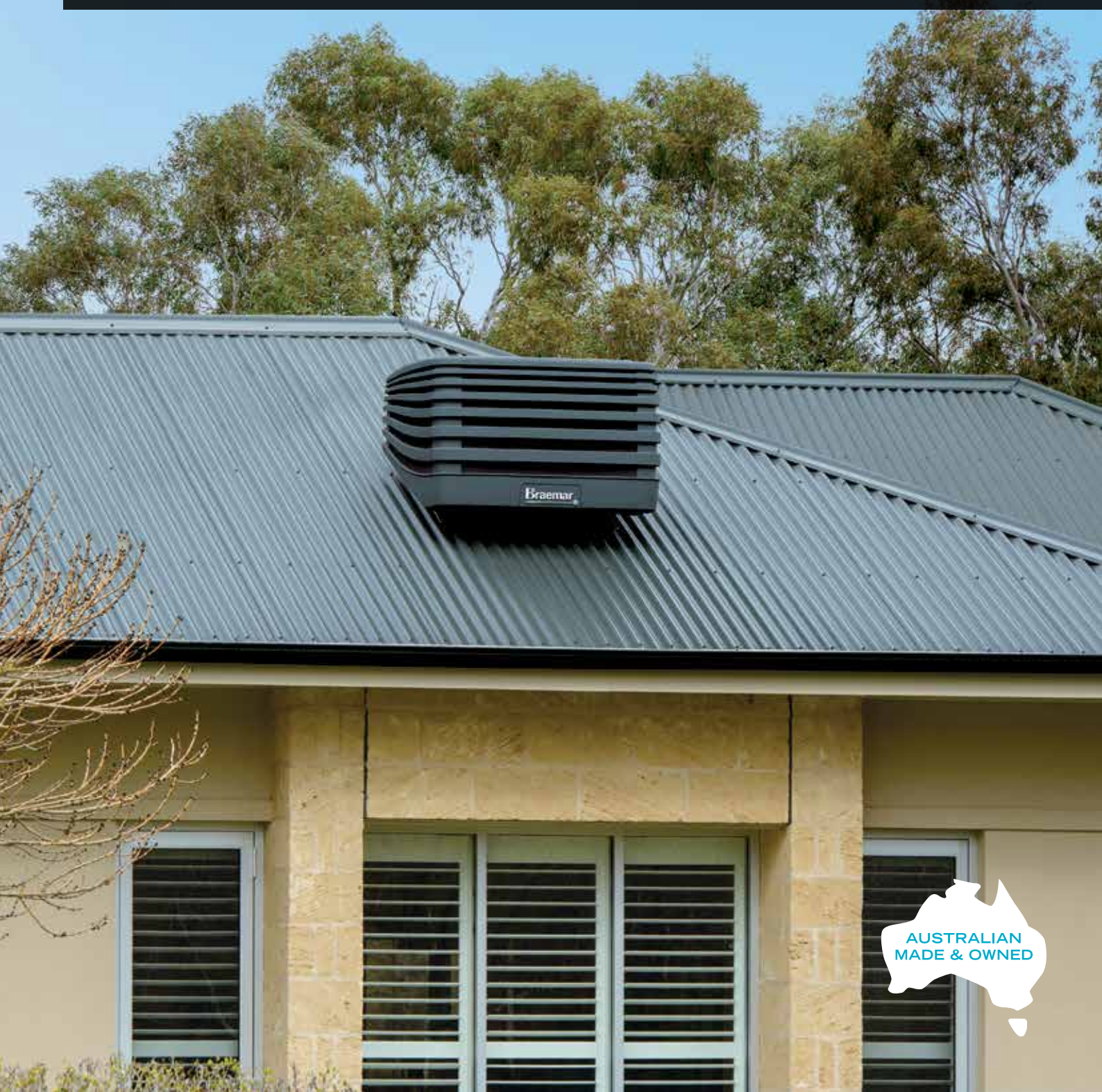




INTRODUCING THE NEW BRAEMAR

# evolution series

**THE COLDEST ULTRA-LOW PROFILE** EVAPORATIVE AIR CONDITIONER



AUSTRALIAN  
MADE & OWNED

*“Seeley International never stops striving to innovate and build the world’s most energy efficient heaters and air conditioners.*

*It is this commitment to excellence that’s at the heart of everything we do.”*

Frank Seeley AM FAICD  
Founder and Executive Chairman



## The award winning company

Seeley International consistently wins awards each year for new product design, innovation and the environment.

Recent awards include:



# evolve your thinking...



## HIGHEST CAPACITY ULTRA LOW PROFILE

The coldest ultra-low profile evaporative air conditioner\*



## SEAMLESS STYLE

Curved louvres blend into your roofline

Low profile, streamline, below the roof ridgeline look



## COST EFFECTIVE

Up to 90% cheaper to run<sup>o</sup>

Save up to 90% on energy bills when compared to a reverse cycle air conditioner



## AUSTRALIAN MADE AND OWNED

Manufactured by family owned Seeley International Australia's largest air conditioning manufacturer



## WARRANTY

Quality that lasts – 3 year comprehensive warranty

65 year history of Braemar excellence and reliability



## QUALITY

NATA accredited test results substantiate superior product performance

Simple to install, maintain and operate



## LIFESTYLE

Perfect for alfresco living, with options for security vents so you can leave doors and windows closed

Whisper quiet operation



## ENVIRONMENT

Delivers fresh, outside air – not stale recycled air

Up to 90% less nasty CO<sub>2</sub> emissions<sup>#</sup>

\*Braemar Evolution LPQI550 has the highest cooling capacity (kW), based on test results of all equivalent capacity sloped tank evaporative air conditioners, performed by a NATA accredited Meridian Test Laboratory, to the requirements of the Australian Standard AS2913-2000 Evaporative Air Conditioning Equipment.

<sup>o</sup>Based on approximate running cost figures sourced from publicly available data. Assumes a whole house area of 166 square metres, with 300 hours usage, 60% duty cycle for air conditioners, and an electricity tariff of 28 cents/kWh. Note that evaporative coolers also use water. Correct at time of publishing. 90% running cost saving based on a Breezair 16kW costing \$37 per year to run, compared to a reverse cycle 20kW costing \$383 per year to run (not zoned standard efficiency).

<sup>#</sup>Seeley International calculations, based on publicly available data (2008). CO<sub>2</sub> emissions based on 1.13kg CO<sub>2</sub> e/kWhr electricity purchased from grid for Victoria. Data sourced from Part 6 or schedule 1 to the National Greenhouse and Energy Reporting (Measurement) Determination 2008 (Compilation No. 97. dated 1 July 20176).

# Leading edge technology

## EVEN WATER COVERAGE

Water distribution system includes a combination of pressurised and free flow water division systems which provide even water coverage within a compact height for maximum pad area and cooling.

## UV STABILISED AND CORROSION FREE

The cabinet and water reservoir components are injection moulded structural foam polypropylene (Permatuf®). The cabinet and reservoir are UV stabilised and corrosion free.

## MAXIMUM COOLING

Honeycomb, high efficiency Chillcel® cooling filter pads cover the entire side of air conditioner to maximise cooling.

## SUPERSTEALTH TECHNOLOGY

SuperStealth inverter motor and SuperStealth fan for high energy efficiency.



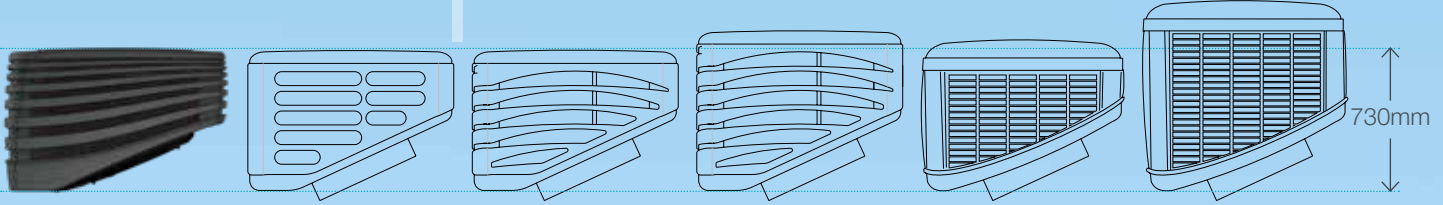
## RELIABILITY

Tornado Pump for exceptional reliability in extreme conditions.

## MINIMISE DRAFTS IN WINTER

The WeatherSeal™ consists of two semi-circular, polypropylene blades, hinged and counterbalanced, to open automatically when the fan is activated, and to close when the fan is switched off.

# high capacity low profile



**Braemar**  
by SEELEY INTERNATIONAL  
evolution series

Max. capacity  
**13.2kW**  
Max. airflow  
**2850L/s**

other brand

Max. capacity  
**12.1kW**  
Max. airflow  
**2440L/s**

other brand

Max. capacity  
**7.5kW**  
Max. airflow  
**2100L/s**

other brand

Max. capacity  
**12.1kW**  
Max. airflow  
**2570L/s**

other brand

Max. capacity  
**6.4kW**  
Max. airflow  
**2130L/s**

other brand

Max. capacity  
**9.8kW**  
Max. airflow  
**2890L/s**

**The Braemar Evolution** is the highest capacity sloped tank evaporative air conditioner on the market\*...and one of the smallest.

With its low profile, sleek design, it unobtrusively sits below the roof ridgeline to blend seamlessly into your home.



\*Braemar Evolution LPQI550 has the highest cooling capacity (kW), based on test results of all equivalent capacity sloped tank evaporative air conditioners, performed by a NATA accredited Meridian Test Laboratory, to the requirements of the Australian Standard AS2913-2000 Evaporative Air Conditioning Equipment.

# touch screen control

**The Braemar Evolution** is controlled  
by the intuitive MagIQtouch touch screen controller



## **PROGRAM MODE**

7 day, 4 time period program, customisable to suit your lifestyle (including a temporary over-ride function).



## **ENERGY SAVING QUIET MODE**

Automatically reduces fan speed overnight for even greater economy and whisper-quietness.



## **CHILD ACCESS LOCK**

Select a pin code to control access to your Controller.

# specifications



## Colour Range\*



**Slate Grey**



**Terracotta**



**Beige**

\* Colours may vary. Heritage Green made to order.

| Model                    | Cooling capacity (kW) | Nominal power motor (W) | Length (mm) | Width (mm) | Height – Front (mm) | Height – Rear (mm) | Operating weight (kg) | Airflow (L/s) |
|--------------------------|-----------------------|-------------------------|-------------|------------|---------------------|--------------------|-----------------------|---------------|
| <b>Evolution LPQI350</b> | <b>10.4</b>           | 430                     | 1150        | 1150       | 730                 | 380                | 88                    | 2000          |
| <b>Evolution LPQI550</b> | <b>13.2</b>           | 950                     | 1150        | 1150       | 730                 | 380                | 88                    | 2850          |

The above data was drawn from Meridian Test Laboratory's test analysis. The testing was performed by a NATA accredited laboratory to the requirements of the Australian standard AS2913-2000 "Evaporative Air Conditioning Equipment." Achievable with ambient 38 °C DB, 21°C WB, room temperature 27.4 °C.

**Braemar**<sup>TM</sup>  
By **SEELEY INTERNATIONAL** 

evolution

**+27 (0) 11 452 0394**

[southafrica@seeleyinternational.com](mailto:southafrica@seeleyinternational.com)

**Seeley International (Africa) Pty Ltd**

14 Brunton Circle, Foundersview South  
Modderfontein 1609  
Gauteng, SOUTH AFRICA

