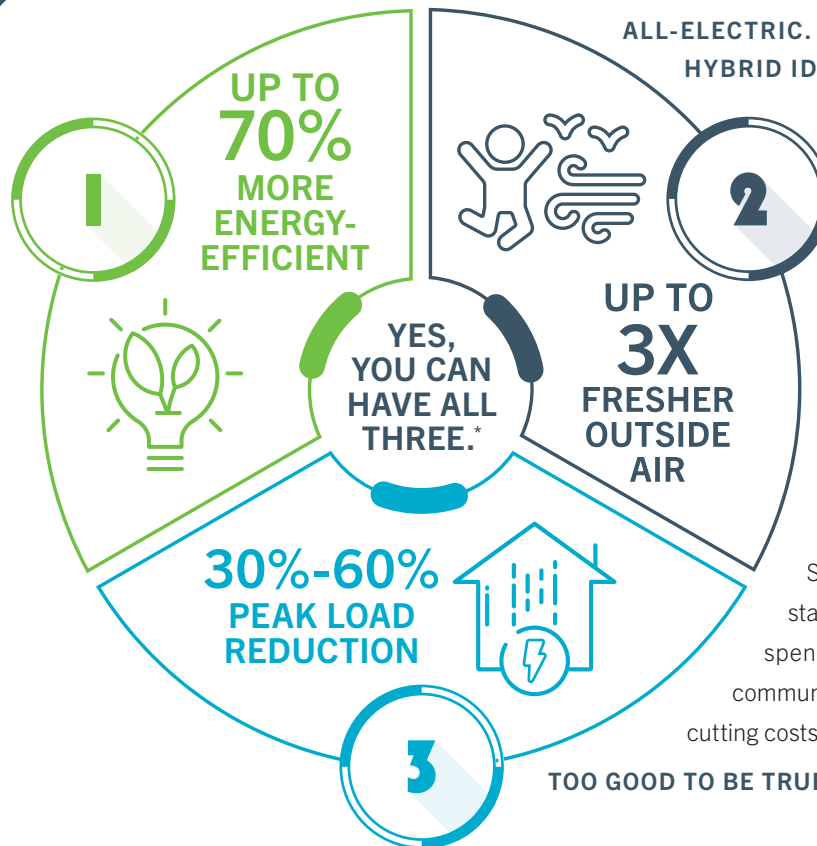


ELECTRIFYING EFFICIENCIES

That's The CW Hybrid Difference



ALL-ELECTRIC. ALL-SEASON.

HYBRID IDEC/HP COOLING AND HEATING

The extreme climate and energy challenges of today demand a total reimagining of HVAC performance. Today's technologies can be advanced even further. Through fresh thinking and innovative engineering, we've pioneered a new day in indoor air quality and comfort, enabling unprecedented efficiencies in HVAC electrification and decarbonization. That's the unparalleled documented difference of our groundbreaking CW Hybrid solution.

Seeley International has boldly raised the standard in lowering energy consumption and spend — for customers, companies, and communities alike. Boosting leading-edge efficiency, cutting costs, and improving indoor air quality and comfort.

TOO GOOD TO BE TRUE? HERE'S WHY IT'S NOT...

Delivering The Metrics That Matter

❖ EFFICIENCY IMPACT



66%
REDUCTION IN
CO2 EMISSIONS

Drop GHG levels and help California reach 2050 goals.



**ELECTRIFICATION &
DECARBONIZATION**

Next-generation HVAC electrification and decarbonization protects the environment and your bottom-line.



**WATER
NEUTRALITY**

Proprietary evaporative cooling dramatically reduces water usage while lowering the utility load, working in unison to support water neutrality.

❖ APPLICATION IMPACT



**INDOOR
COMFORT COOLING**

Maintain cooling setpoints while delivering larger volumes of outside air, increasing the number of air changes per hour in the space.



**OUTDOOR AIR
SENSIBLE COOLING
(FULL OA APPLICATIONS)**

Provide large volumes of conditioned make-up air at ~3X less energy consumed, compared to a DOAS system, with no need to add complex economy dampers or energy recovery processes.

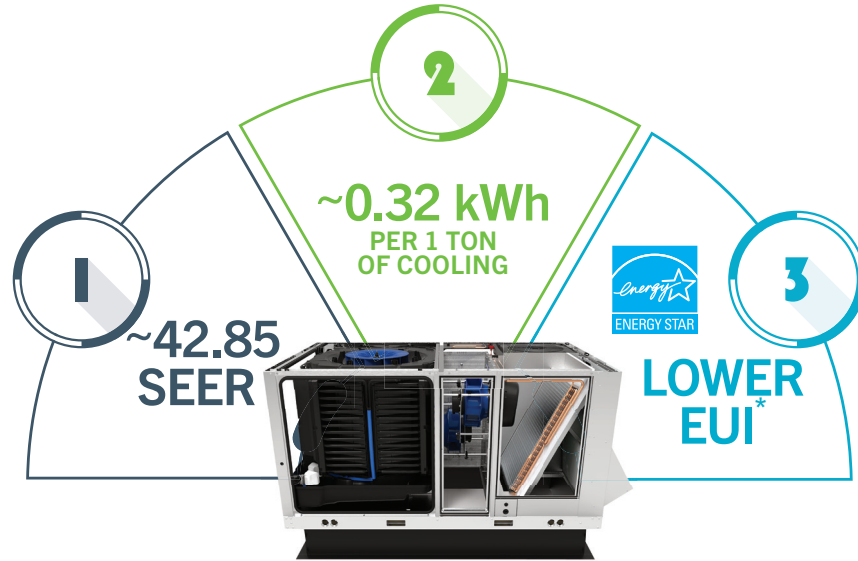


**HEATING MODE
ADVANTAGE**

A smaller compressor provides more headroom for adding supplementary heating, without having to upgrade the main power supply, reducing electrical upgrade costs.

Decrease Costs By Increasing Efficiency.

❖ THE SAVINGS FROM MORE EFFICIENT SUMMER COOLING PAYS FOR YOUR WINTER HEATING.



Delivering The Metrics That Matter

❖ SAVINGS IMPACT



LOWER CAPEX & OPEX

Reduce Total Cost of Ownership (TCO) by lowering capital expenses during installation, and cut operating costs by optimizing runtime and improving efficiency.



EASY MAINTENANCE & SERVICEABILITY

Greater access to system components speeds up servicing and ongoing maintenance, minimizing business interruption and downtime.



REMOTE MONITORING & MANAGEMENT CONVENIENCE

Onboard Building Management System (BMS) enables remote configuration, round-the-clock monitoring, and day-to-day energy management.

❖ HUMAN IMPACT



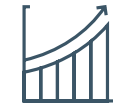
REDUCED REBREATHED AIR

Greater filtered ventilation enhances indoor air quality by consistently delivering cooler, fresher, healthier air.



IMPROVED COGNITIVE FUNCTION

Comparative independent studies confirm how cleaner, fresher, healthier air improves cognitive function in the classroom and the workplace.



ENHANCED BUSINESS PERFORMANCE

Boost employee performance, efficiency, and productivity, while reducing absenteeism. That's the power of breathing SAFER-Air.™

A Fresh Approach To Thermal Comfort

❖ TO LEARN MORE about how Seeley International's CW Hybrid solution revolutionizes how your business provides economical and energy-efficient thermal comfort to employees and customers year-round, please visit SeeleyInternational.com/us.



* NOTE: (Energy Utilization Index) <https://www.energystar.gov/buildings/benchmark/understand-metrics/what-eui>. All diagrams, data, figures and claims presented in this document are based on Seeley International's internal research, testing, and analysis. Actual performance may vary depending on installation conditions and specific operating environments.